

Product info sheet

VDO

A2C59511601

Special tools needed?

No

Product specific information

Programming

Yes

Classification code

All mounted injectors must have the same classification. This partnr. concerns class 6.
If no class is marked, use class 5. Programming only needed when class is changed.

Unlocking

No

Adaption values reset

No

Bleed

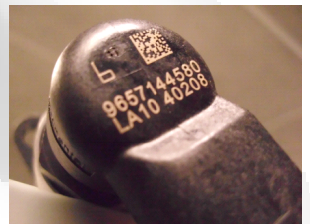
No

adjustment at mounting_1

No

adjustment at mounting_2

--



Tightening torques

Injector/ retaining clamp

4 Nm + 65°

High Pressure pipe nuts

25 Nm

Bolts valve cover

9 Nm

Assembly instructions

Replace sealing washer

Core charge terms:

- externally intact,
- no mechanical damage,
- not dismantled,
- no heavy corrosion.