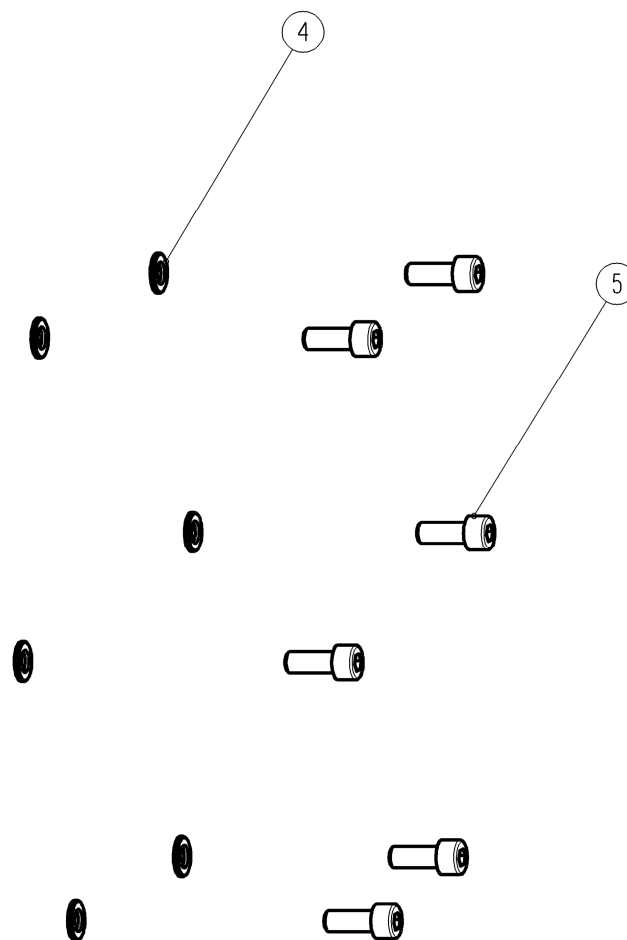
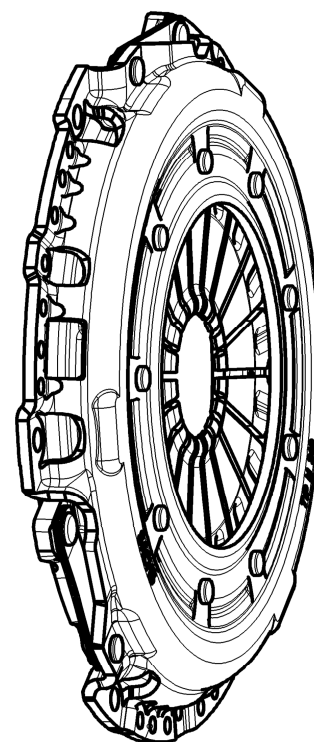
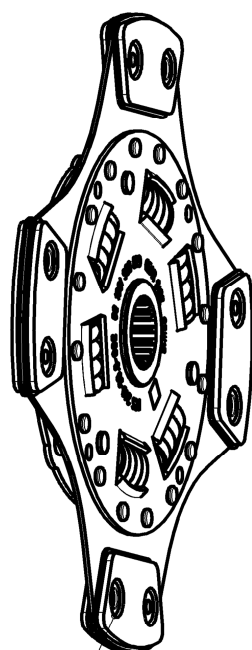
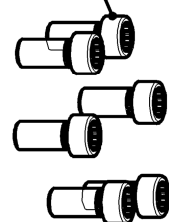
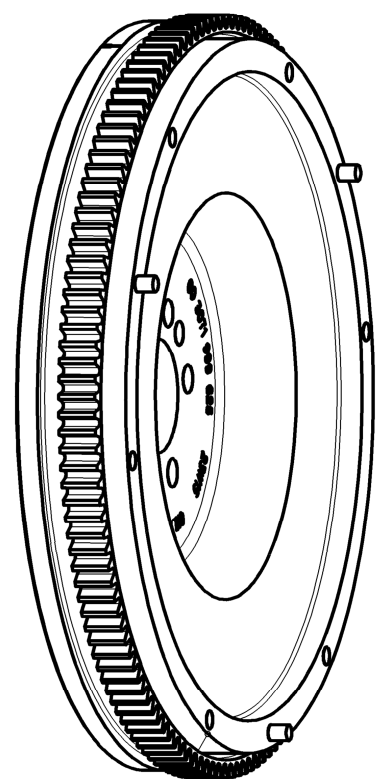


Einbauanleitung/INSTALLATION INSTRUCTION

KUPPLUNGSMODUL PCS 240
CLUTCH MODULE PCS 240

883089 000035

(Kurbelwellenschrauben
Nicht im Lieferumfang enthalten!
CRANKSHAFT BOLTS
NOT INCLUDED IN DELIVERY!)



Stückliste/PARTS LIST: 883089000035

| Nr NO | Identnummer PART-NO. | Bezeichnung DESCRIPTION | Menge QUANTITY |
|-------|----------------------|--|----------------|
| 1 | 003071999625 | ZSB SCHWUNGRAD PCS 240 FLYWHEEL ASSY PCS 240 | 1 |
| 2 | 881861999879 | KUPPLUNGSSCHEIBE 240TS CLUTCH DISC 240TS | 1 |
| 3 | 883082999798 | ZSB. DRUCKPLATTE M240 CLUTCH COVER MF240 | 1 |
| 4 | 003018999524 | Scheibe DIN 125 - B 8,4 - St. DISK DIN 125 - B 8.4 - ST. | 6 |
| 5 | 003015000023 | ZYLINDERKOPFSCHRAUBE M8x20-12,9 CYLINDER HEAD BOLT M8x20-12,9 | 6 |

Position 4 und 5 in ZSB Schwungrad beigelegt
POSITION 4 AND 5 ENCLOSED IN FLYWHEEL ASSY