



Service Info

Double disc clutches for commercial vehicles

Different hub design

LuK RepSet:	640 3006 18
	640 3008 18
	640 3012 18
	640 3025 18
	640 3027 18
	640 3038 18

In the RepSet listed above, there are different design configurations of the clutch disc hub (Fig. 1) depending on the clutch manufacturer.

With LuK double disc clutches (Fig. 2), the hubs of both clutch discs correspond to the spline of the transmission input shaft.

Double disc clutches from other suppliers (Fig. 3) can be equipped with a clutch disc that features an elongated hub profile. Here the force of the second clutch disc is not transmitted via the hub to the transmission input shaft, but rather via an inner spline to the hub of the first clutch disc.

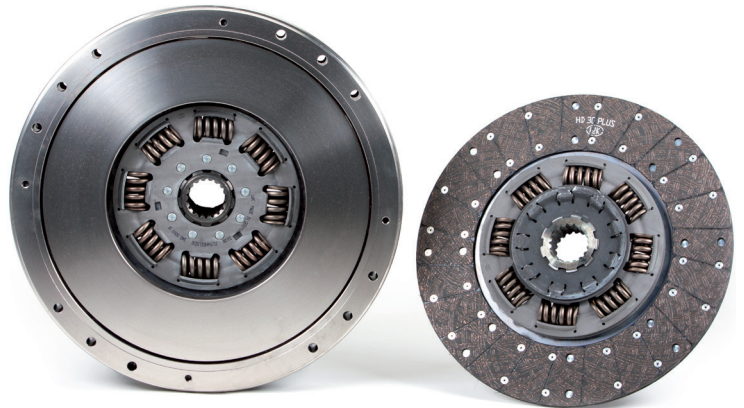


Fig. 2: LuK double disc clutch with same hub profiles

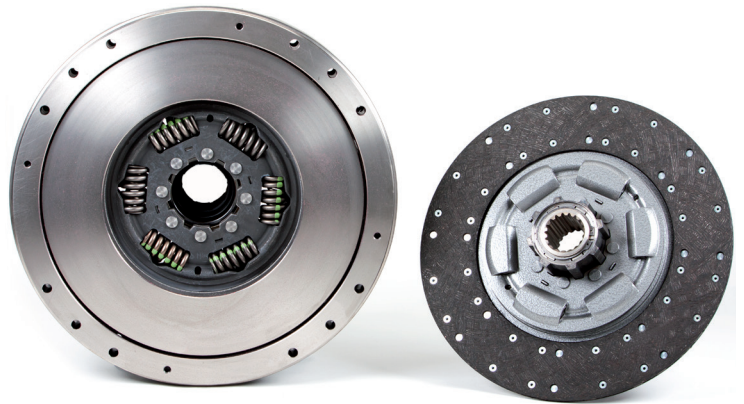


Fig. 3: Example of a double disc clutch with different hub design

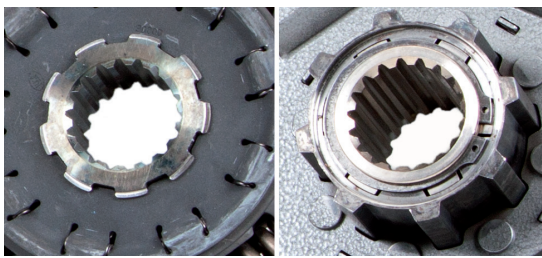


Fig. 1: LuK hub (left), hub of another supplier (right)

When replacing the clutch, the LuK RepSets listed above for the vehicles specified in the catalogue media can be used, even if a clutch with a long hub profile has been previously installed.

Please observe the vehicle manufacturer specifications!

You want more? We can help!

Phone: +44 (0) 1432 264 264*

Fax: +44 (0) 1432 375 760

hfd-info@schaeffler.com

www.schaeffler-aftermarket.co.uk

* Calls from within the UK 08457 001100

